



Favorite Country Dances, Hornpipes & Reels.

with their proper Figures.

for the German Flute or Violin.

As Performed at Court, & all  
PUBLIC ASSEMBLIES.

Ent. at Sta. Hall

1803.

Part 1.

London, Printed & Sold at Bland & Wellers, Music Warehouse  
N<sup>o</sup>. 23 Oxford Street.



N<sup>o</sup> 1 Tarry awhile 1803

N<sup>o</sup> 2 The Hamburg Waltz 1

*MS*

Musical notation for 'Tarry awhile' in 6/8 time, consisting of four staves of treble clef notation. The piece features a mix of eighth and sixteenth notes, with a repeat sign at the end of the fourth staff.

Musical notation for 'The Hamburg Waltz' in 3/8 time, consisting of four staves of treble clef notation. The piece features a mix of eighth and sixteenth notes, with a repeat sign at the end of the fourth staff.

Set & turn hands 3 with the 2<sup>d</sup> Lady  
 D<sup>o</sup> with 2<sup>d</sup> Gent: down the middle up  
 again & Allemand.

Set & hands acrofs, back again  
 down the middle up again &  
 Allemand.

2 N<sup>o</sup>. 3 Lady Harriot Leslies Waltz. 2

Musical score for 'Lady Harriot Leslies Waltz'. The piece is in 3/8 time, G minor, and consists of two systems of four staves each. The first system includes a piano (*p*) dynamic marking. The second system includes a forte (*f*) dynamic marking and first and second endings. The notation features a mix of eighth and sixteenth notes, with some triplets and slurs.

Set & hands acrofs ↯ back again ↯ down the middle up again ↯ Allemand ↯ Swing Corners ↯.

N<sup>o</sup>. 4 Miss Louisa Johnstones Fancy

Musical score for 'Miss Louisa Johnstones Fancy'. The piece is in 2/4 time, D major, and consists of two systems of four staves each. The notation includes various rhythmic patterns, including eighth and sixteenth notes, and rests. There are some handwritten annotations above the notes, possibly indicating fingerings or articulation.

Set & hands 3 round on the Ladies side ↯ D<sup>o</sup>. on the Gents ↯ Lead down the middle & up again ↯ Allemand ↯ hands 4 at bottom ↯ Right & left at top.

N<sup>o</sup>. 5Trip to Weymouth. ~~X~~ 3

Musical score for 'Trip to Weymouth' in G major, 3/4 time. The score consists of four staves. The first two staves contain the main melody with slurs and accents. The third and fourth staves show first and second endings, respectively, both marked with a first ending bracket and ending with a double bar line. The key signature has one flat (F major), and the time signature is 3/4.

Set & half right & left  $\dot{=}$  back  
again  $\dot{=}$  Down the middle up  
again  $\dot{=}$  Allemand  $\dot{=}$

N<sup>o</sup>. 6

## Garnerins Waltz. 3

Musical score for 'Garnerins Waltz' in G major, 3/8 time. The score consists of four staves. The first two staves contain the main melody with slurs and accents. The third and fourth staves show first and second endings, respectively, both marked with a first ending bracket and ending with a double bar line. The key signature has one flat (F major), and the time signature is 3/8. Dynamics include *f* and *p*.

Set & hands acrofs  $\dot{=}$  back again  $\dot{=}$  lead down  
the middle, up again  $\dot{=}$  Allemand  $\dot{=}$  Swing  
Corners  $\dot{=}$  .

4

Nº 7

# The Fairies Revels

Musical notation for 'The Fairies Revels' consisting of four staves of music in treble clef, 6/8 time signature, and one sharp (F#) in the key signature. The music features a mix of eighth and sixteenth notes with some rests.

Cast off Couples & up again i Change  
Sides & back again i down the middle up  
again i hands 6 round .

4

Nº 8

# The Parachute

Musical notation for 'The Parachute' consisting of four staves of music in treble clef, 3/8 time signature, and three sharps (F#, C#, G#) in the key signature. The music is characterized by a dense, rhythmic pattern of eighth notes. A handwritten 'MB' is visible in the top right corner of the first staff.

Set & half right & left i back  
again i down the middle up again i  
Allemand i:

N<sup>o</sup> 13 Madame Ricamiers Waltz

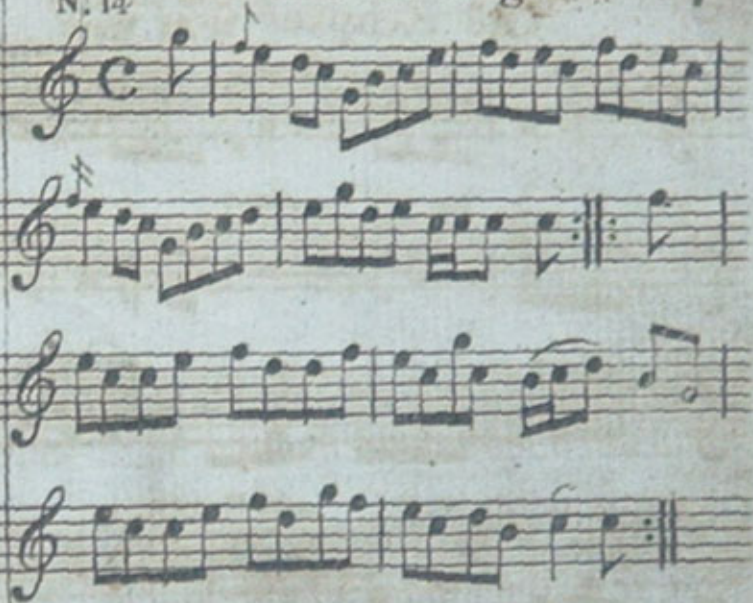
7



Set & hands across back again  $\ddot{=}$  lead down the middle, up again  $\ddot{=}$  Allemand  $\ddot{=}$  Swing Corners.

N<sup>o</sup> 14 The Aerial Flight

7



Set & Change Sides,  $\ddot{=}$  back again - Cross over two Couple  $\ddot{=}$  right and left  $\ddot{=}$

8

## The Eclipse

Compos'd by  
M<sup>r</sup>. W. Ware

8

N<sup>o</sup> 15

Set & half right & left ↯ back  
again ↯ down the middle ↯  
Poussette ↯

M<sup>rs</sup> Hamiltons of Wishaws Strathspey

Slow

N<sup>o</sup> 16

The first Lady Set to 2<sup>d</sup> Gent: & turn ↯ the first  
Gent: set to the 2<sup>d</sup> Lady & turn ↯ down the middle  
up again ↯ Allemand ↯

Earl of Northesks Strathspey. 9

M<sup>r</sup>. John Shaw Stewards Strathspey. 9

Slow

N<sup>o</sup> 17

N<sup>o</sup> 18

The 1<sup>st</sup> Lady leads down the middle & up again  
 with the 2<sup>d</sup> Gent: ♪ the 1<sup>st</sup> Gent: D<sup>o</sup> with 2<sup>d</sup>  
 Lady ♪ Cross over ♪ hands 6 round ♪

Set & change Sides ♪ back again ♪  
 Down the middle & up again ♪  
 Right & left at top ♪



10 Earl of Eglington's Strathspey 10 The Gooseberry Bush or Epping Forest.

Nº 19

Nº 20

Set & hands across  $\curvearrowright$  back again  $\curvearrowleft$   
down the middle & up again  $\curvearrowright$   
Allemand  $\curvearrowleft$

Half right & left  $\curvearrowright$  back again  $\curvearrowleft$   
Down the middle up again  $\curvearrowright$   
Allemand  $\curvearrowleft$

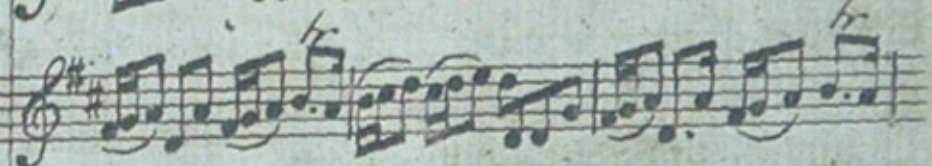
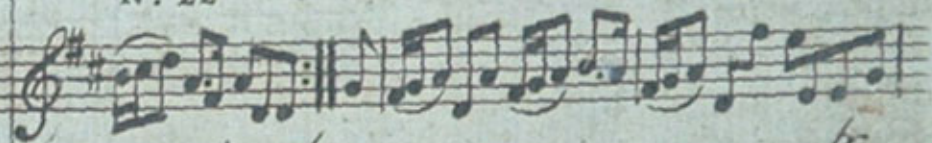
Trip to Paris .

//

This is not my ain House . //

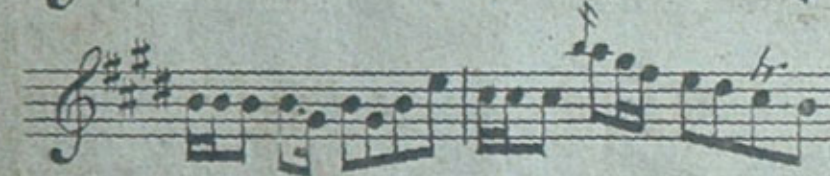
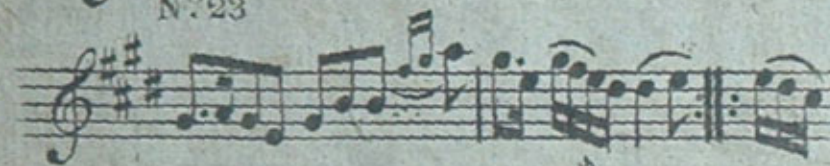


Set & hands across i back again i;  
 down the middle up again i;  
 Allemand i;



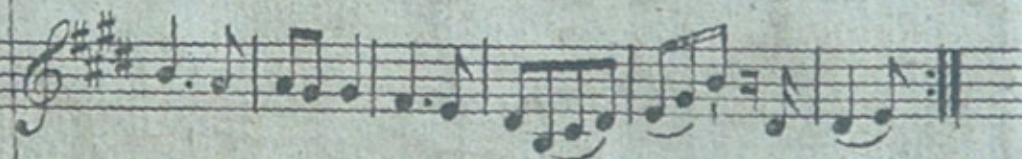
Cast off 2 Couple i up again i down the  
 middle up again i; Allemand i; Turn  
 Corners i; lead outsides i;

## 12 Miss Barbara Parkers Fancy



Set & Change Sides : back again :  
 lead down the middle up again :  
 Allemand :

## 12 The General Election



Hands 3 round on the Lady's side : D<sup>o</sup> on the  
 Gents: : down the middle up again : Allemand :  
 Swing Corners :