

*Twenty four* **COUNTRY DANCES** *for the Year 1805*  
*with proper* **Quies & Directions** *to each Dance*  
*as they are performed at*  
**(COURT, BATH, AND ALL PUBLIC ASSEMBLIES)**

*London. Printed & Sold by Preston, at his Wholesale Warehouse, off. Strand.*

Where may be had

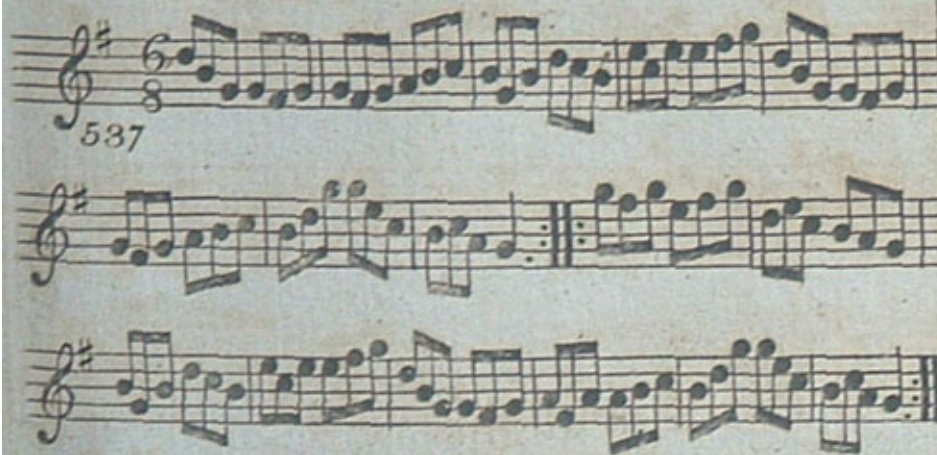
*Twenty four. Fashionable Country Dances. Reels & Waltzes adapted for  
the Piano, Forte or Harp, humbly dedicated to the Nobility & Gentry.* Price 2/6

# DANCES, 1805.

The Humours of Cork

Thro' the wood of Fife

229



Lead down the middle up again and allemande  
swing corners. foot it outsides.

Cast off one Cu. up again. lead down the middle  
up again and turn your partner.

230 Capt<sup>n</sup> Keeler's Reel

15



Miss Maxwell's Reel

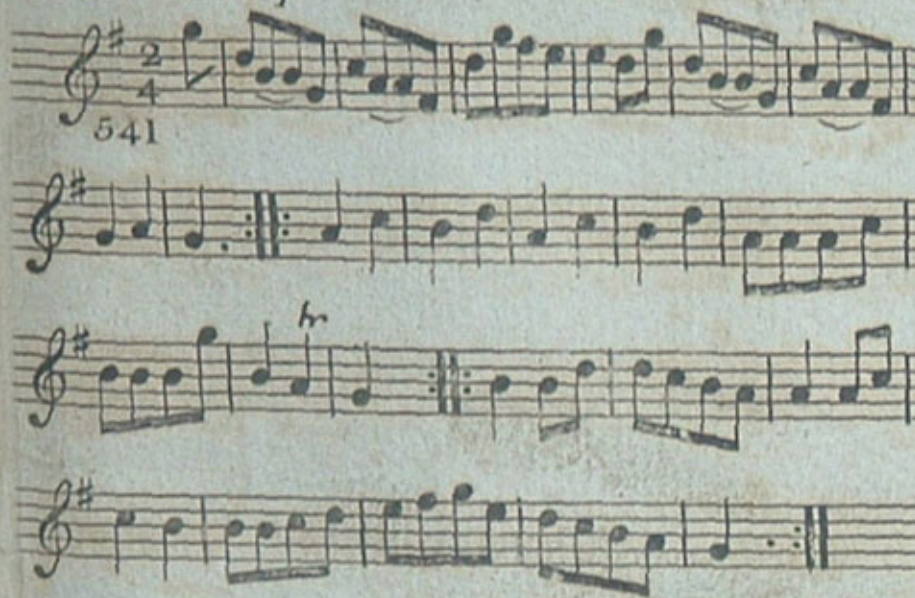
14



1<sup>st</sup> and 2<sup>d</sup> Cu. set and half right and left.  
back again, lead down the middle up again  
[allemaude.

1<sup>st</sup> and 2<sup>d</sup> Cu. set and half right and left.  
back again, lead down the middle up again  
pousette with the 2<sup>d</sup> Cu.

## The Triumph



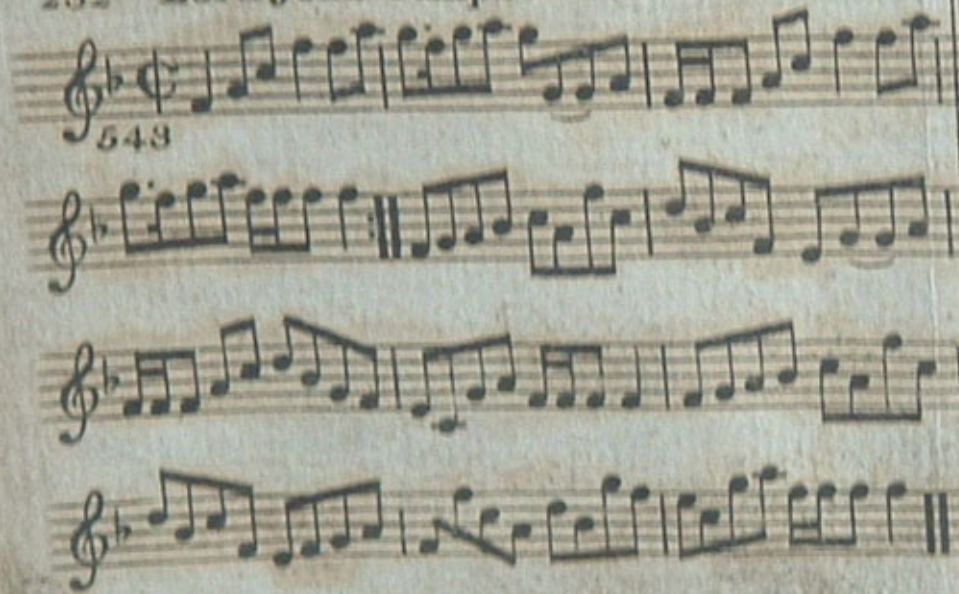
Set 4 hands across half round the same back again. the 2<sup>d</sup> Gent.<sup>n</sup> lead the 1<sup>st</sup> Lady into the 3<sup>d</sup> Cu.<sup>s</sup> place the 1<sup>st</sup> Gent.<sup>n</sup> cross over and meet them lead up to the top cast off one Cu. turn your part<sup>r</sup>.

Duchess of Bedford's Strathspey 103 231

Change sides. back again. lead down the middle up again allemande. swing corners and lead outsides.

232 Lord John Campbell's Reel

16



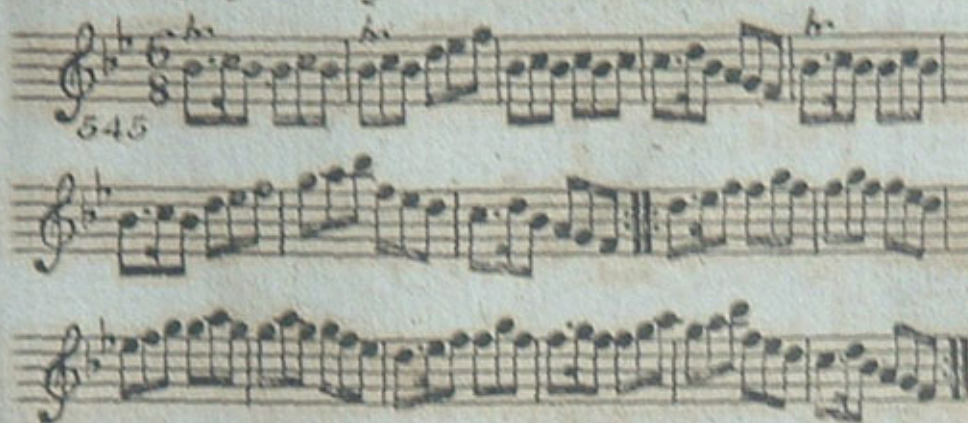
1<sup>st</sup> Lady foot it to the 2<sup>d</sup> Gent<sup>n</sup> and turn the 3<sup>d</sup> 1<sup>st</sup> Gent<sup>n</sup> do the same to the 2<sup>d</sup> and 3<sup>d</sup> Ladies lead down the middle up again and cast off.

The magic Oak



1<sup>st</sup> and 2<sup>d</sup> Cu. hands across, back again, lead down the middle up again hands 4 round at top and swing corners.

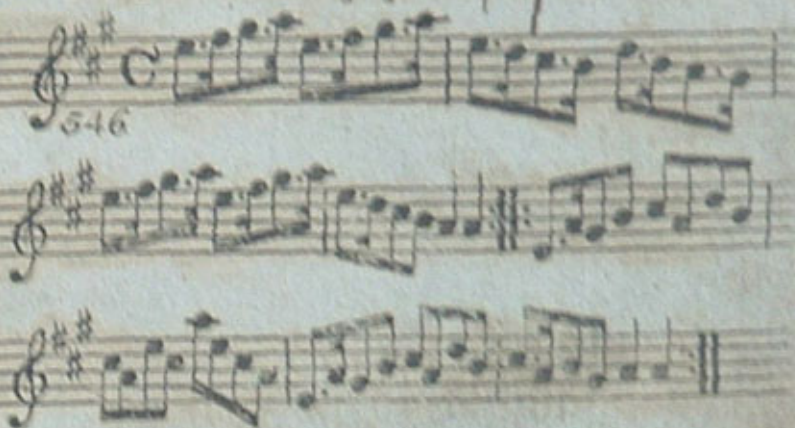
Murphy Delany



1<sup>st</sup> Cu. set to the 2<sup>d</sup> Lady hands 3 round, same with the 2<sup>d</sup> Gent.<sup>n</sup> lead down the middle up again right and left.

Laborie's Hornpipe

233



1<sup>st</sup> and 2<sup>d</sup> Cu. change sides, back again, lead down the middle up again hands 4 round at top.

234 M.<sup>rs</sup> W.<sup>m</sup> Lushington's Reel



1<sup>st</sup> and 2<sup>d</sup> Cu. set and change sides. back again. lead down the middle up again and allemande.

Norah Greenah

Irish



Lead down the middle up again and turn your partner then swing corners.

Pinto's whim. a Reel



1<sup>st</sup> Lady set to the 2<sup>d</sup> Cent<sup>n</sup> and turn round  
with both hands. the Gent<sup>n</sup> do the same to the  
2<sup>d</sup> Lady. lead down the middle up again and  
foot it.

Off she goes

235



Cast off 2 Cu. back again. lead down the middle  
up again. hands 4 round right and left at top.



236 Miss Blair's Strathspey

551

552

553

554

1<sup>st</sup> Cu. lead round  
the 2<sup>d</sup> and 3<sup>d</sup> Cu.  
and back again to their own places. lead down  
the middle up again and allenmaude.

Miss Ellison Chalmer's fancy

551

552

553

554

1<sup>st</sup>

2<sup>d</sup>

Set and change sides back again. lead down  
the middle up again and turn your partner.

The new Town of Edinburgh

553

Handwritten musical notation for 'The new Town of Edinburgh'. It consists of four staves of music in a single system. The key signature has one flat (B-flat) and the time signature is common time (C). The notation includes various rhythmic values such as eighth and sixteenth notes, often beamed together. There are repeat signs at the end of the second and fourth staves.

1<sup>st</sup> and 2<sup>d</sup> Cu. change sides. back again. hands across. back again. lead down the middle up again right and left.

The Arch Duke Charles's Waltz

237

554

Handwritten musical notation for 'The Arch Duke Charles's Waltz'. It consists of four staves of music in a single system. The key signature has one flat (B-flat) and the time signature is 3/8. The notation includes various rhythmic values such as eighth and sixteenth notes, often beamed together. There are repeat signs at the end of the second and fourth staves.

1<sup>st</sup> Lady and 2<sup>d</sup> Gent<sup>n</sup> change places. 1<sup>st</sup> Gent<sup>n</sup> and 2<sup>d</sup> Lady do the same. poussette with the 2<sup>d</sup> Cu. quite round. right and left with the 2<sup>d</sup> Cu.


20 B



Foot it and cast off 2 Cu. the same back again.  
lead down the middle up again, swing corners.  
and lead out sides.



1<sup>st</sup> Cu. set to the 2<sup>d</sup> Lady and hands 3 round.  
the same with the 2<sup>d</sup> Cent.<sup>n</sup> lead down the mid-  
dle up again, right and left.

 Leith Races



557

Handwritten musical notation for 'Leith Races' on three staves. The first staff begins with a treble clef, a 6/8 time signature, and the number 557. The music consists of a series of eighth and sixteenth notes, ending with a double bar line. The second and third staves continue the melody with similar rhythmic patterns.

1<sup>st</sup> and 2<sup>d</sup> Cu. foot it and turn your part<sup>s</sup>  
then hands across with the 2<sup>d</sup> Cu. right  
and left.

Major Robertson's Reel 239



558

Handwritten musical notation for 'Major Robertson's Reel' on three staves. The first staff begins with a treble clef, a common time signature, and the number 558. The music features a mix of eighth and sixteenth notes, with some notes marked with a 'b' (flat). The piece concludes with a double bar line.

1<sup>st</sup> and 2<sup>d</sup> Cu. hands across back again, lead  
down the middle up again poussette at top.

240. Windsor Castle

X



1<sup>st</sup> and 2<sup>d</sup> Cu. set and change sides. back again.  
lead down the middle. up again and allemande.

Lady Carr Glynn's fancy

X



Hands across back again. lead down the  
middle up again right and left.